

FURUTECH

PURE TRANSMISSION



Flow-C15 Filter (G)

Inline Power Filter



AC Power Can Make or Break Your System!

The audio you hear from your home entertainment system is essentially the incoming electricity itself, and the typically violent storms riding the AC line, and its ground are very detrimental to the performance of your components.

The Flow-C15 Filter (G) is a superbly engineered and finished inline power filtering unit that eliminates many common problems caused by contaminated electrical power lines. It protects against distortion caused by ground noise, voltage spikes and sags, high frequency power supply noise from other components in your own system, and finally high-frequency digital noise emanating from processors and digital interconnects.

Plus, you're never alone when you take your listening seat; the residential AC supply is shared with other apartments, homes, and businesses on the same utility transformer explaining why many enthusiasts find their systems perform to a higher standard late at night and over weekends.

And while the Flow-C15 Filter (G) is a star performer at eliminating common AC problems, it does it all without restricting current draw in any way. Furutech, known for its world-class Pure Transmission engineering, build and finish, have done the tests and the Flow-C15 Filter (G) does not interfere with current draw. The AC-1501 (G) EMI-filtering IEC input perfectly complements the remarkably effective Flow-C15's ability to eliminate distortion. The IEC connector used is the Furutech audio grade FI-C15 (G). The body is made of a special nylon resin with vibration damping properties. The electrodes are made of gold-plated pure copper with excellent conductive properties and treated with Furutech's α -process.

The Flow-C15 Inline AC Filter lowers noise on every component on which it's used resulting in very natural and extremely fine resolution down and through the utterly silent noise floor. It improves sound staging and imaging while creating nuanced high frequencies, an attractive, engaging midrange, tight and controlled bass, with power and dynamics to spare.

The Flow-C15 Filter (G) with its slimline IEC connector design is perfect for 4K / 8K TVs and low-profile audio & video components.



Flow-C15 Filter (G)



Other Models

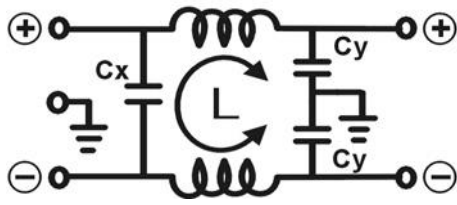
Amazing Features

- The body of the Flow-C15 Filter (G) combines two “active” materials: Nano-sized ceramic particles and powdered carbon plus Nylon and fiberglass to form an extremely effective *mechanically and electrically* damped body
- Use between power cables and power distributors or power cables and components
- Eliminates radiated AC noise
- Fitted with 24k gold-plated α (Alpha) nonmagnetic FI-C15 (G) connector
- AC-1501 (G) EMI-filtering IEC features 24k gold-plated α (Alpha) nonmagnetic copper alloy conductors.
- α (Alpha) conductor shield for protection against radiated noise
- RoHS-compliant flexible PVC sheath improves vibration isolation
- Special high-grade PE Insulation contributes to reduced capacitance

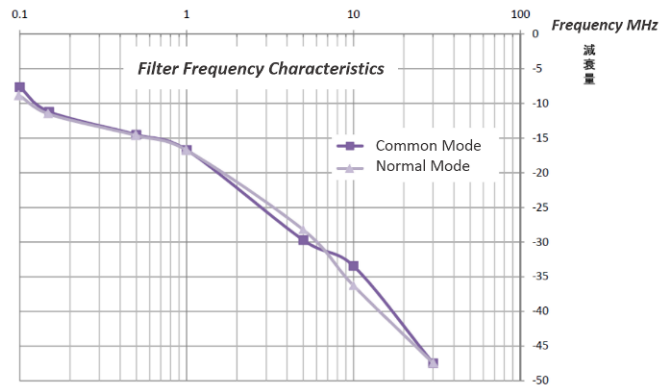
The AC-1501 (G) EMI Filtering IEC Input

The parallel circuit with in-line coil and capacitor reduces noise at 100 KHz by 8dB and at 500 KHz by 14dB and at 10MHz by more than 30dB





L: 2*0.3mH – Cx: 0.1uF – Cy: 3300pF

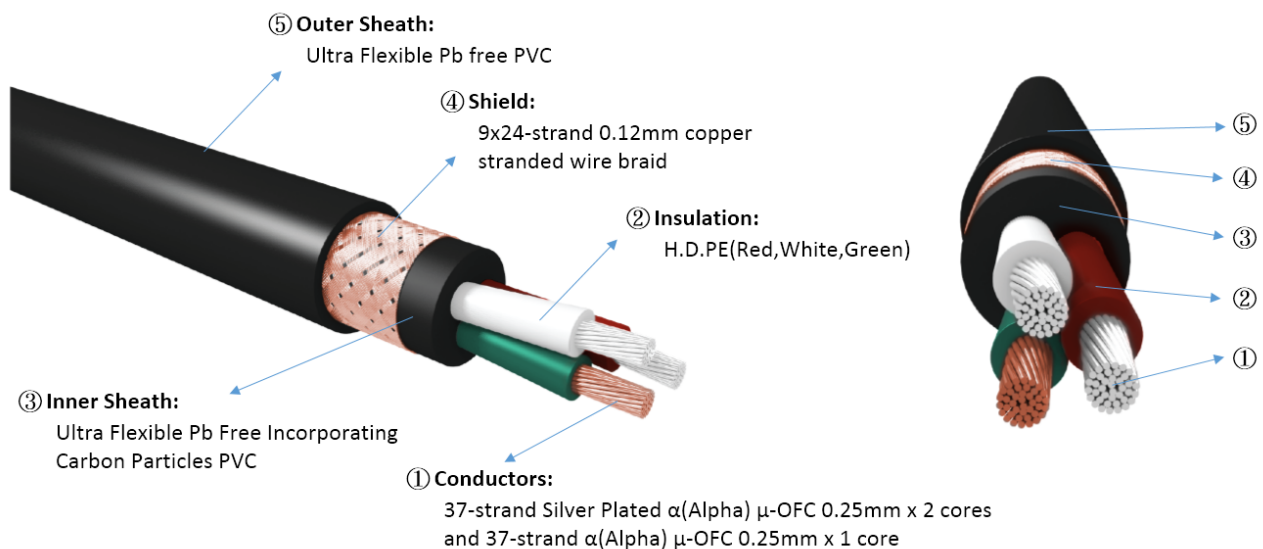


- 24k gold-plated α (Alpha) nonmagnetic copper alloy conductors
- Outer cover • Ni-plated steel-plate
- Inner Box and cover • PBT (Poly Butylene Terephthalate)
- Rating: AC 125V 15A / AC 250V 10A 50/60Hz

The Flow-C15 complies with IEC standards and features the EMI filter AC-1501 G (UL E134751 / CSA Certificate Number: 1224486) and the IEC connector FI-C15 (G) (PSE Certificate Number: JET7873-43004-1001 / KEMA-KEUR Certificate Number: 35-104104 REV.1), both of which meet IEC regulations.

Cable Specifications

- Conductors • 37-strand Silver Plated α (Alpha) μ -OFC 0.25mm x 2 cores and 37-strand α (Alpha) μ -OFC 0.25mm x 1 cores
- Insulation • High-density P.E. (Red, White, Green) 3.43mm diameter
- Inner Sheath • RoHS-compliant flexible PVC incorporating carbon particles
- Shield • 0.12mm diameter α (Alpha) Conductor wire braid
- Sheath • RoHS-compliant flexible PVC, 12.9mm diameter approx.



Make a More Powerful Connection with Furutech!

| Product name | Product Introduction | JAN CODE |
|---------------------|----------------------|---------------|
| Flow-C15 Filter (G) | Inline Power Filter | 4580370444896 |

FURUTECH CO., LTD. service@furutech.com www.furutech.com